

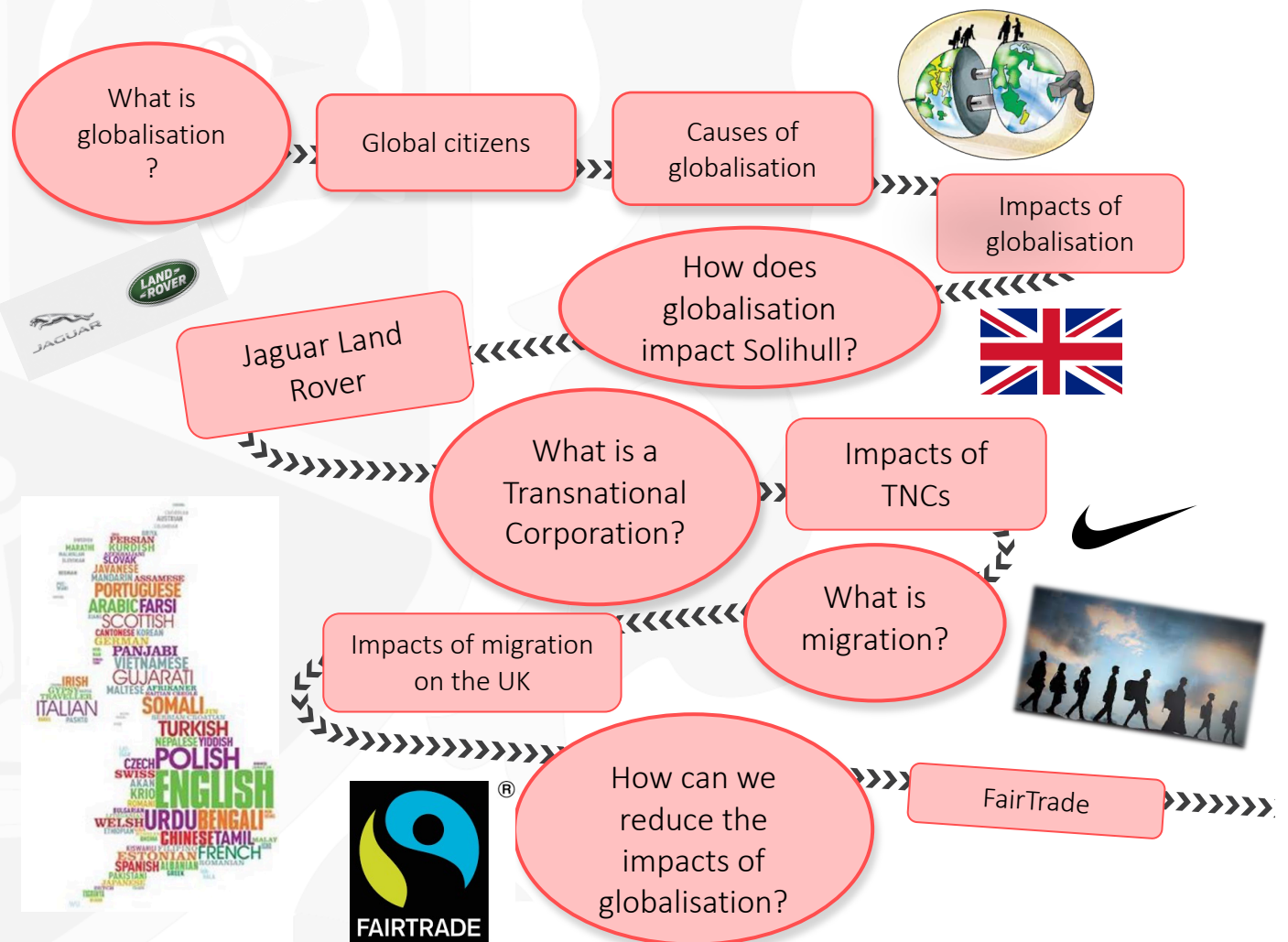
LEARNING JOURNEY GEOGRAPHY



Connected World

Year 7 Summer Half Term 1

Connected World is a topic that draws together lots of geographical themes from human geography; you build on your knowledge and look at how **migration**, tourism, **transnational corporations** and **FairTrade** are all linked together through globalisation and it will enable you to have a greater understanding of your own place in the world. Globalisation impacts you as an individual, your local area and others in far away countries. This topic will expose you to some key themes further along in your geography learning journey such as the Year 8 'Challenging Cities' topic and the Year 9 'Development in Uganda' topic.



TUDOR HABITS AND VALUES: This topic requires you to understand your role as a global citizen and the impact you have on poorer countries when you buy products made there. Therefore you will need to embody the Tudor Habits of responsibility and integrity as well as having empathy .

VOCABULARY: globalisation, transnational corporation, immigrant, refugee, outsourcing, FairTrade