

# LEARNING JOURNEY

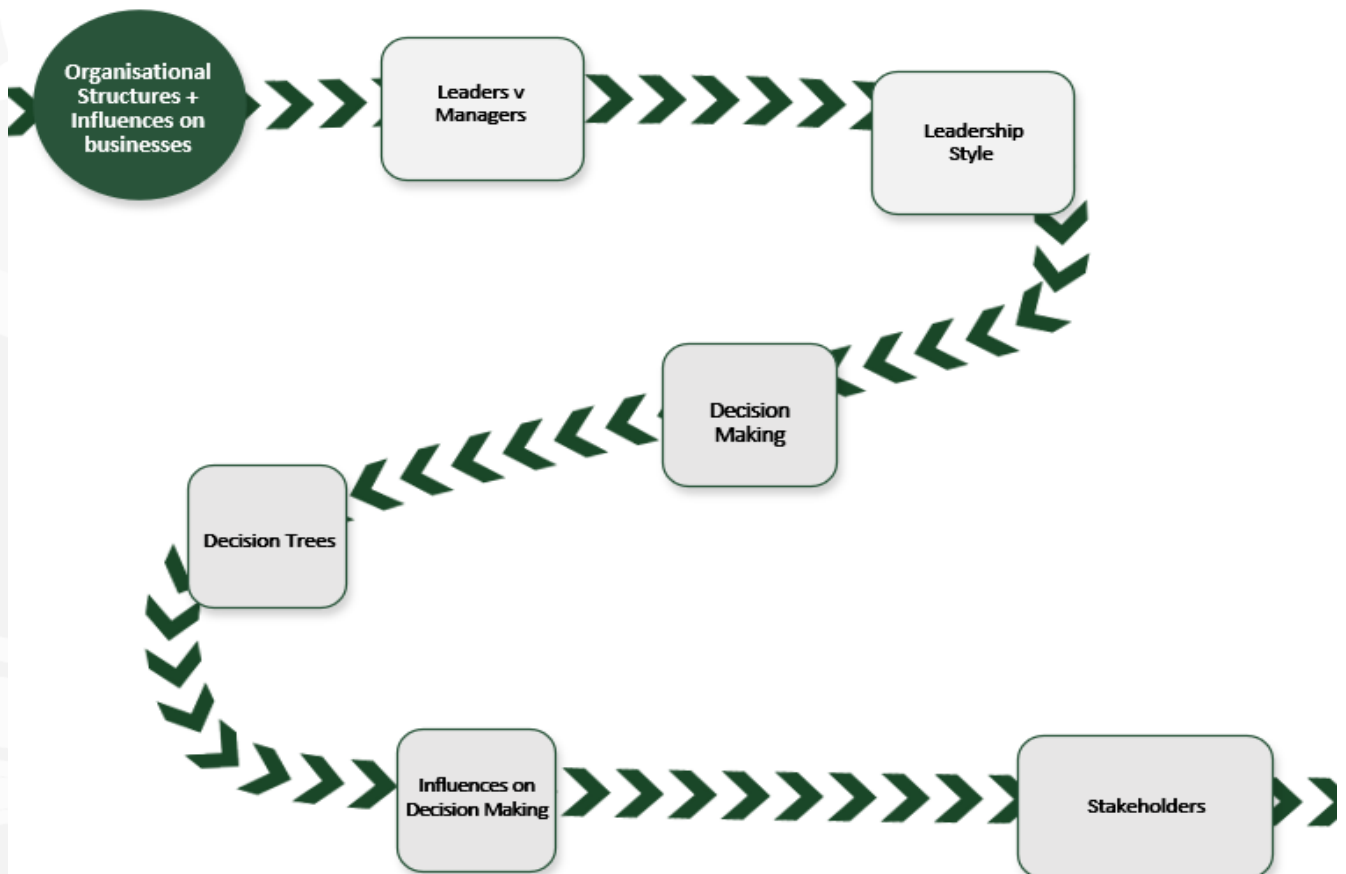
## Business



### Management & Leadership Year 12 – Autumn 2

During your working lifetime, you will be involved in both decision making and leadership. Through the study of this unit, you will gain a valuable insight into the different leadership styles an effective manager may adopt and gain an appreciation of how changing these styles, depending on the situation, can lead to better results in the long term. You will gain a greater understanding of the decision-making process and learn some scientific and data driven approaches to it.

The concept of stakeholders is not only present in the field of business but more widely seen in society. By examining the concept of stakeholders and stakeholder mapping, you will gain an understanding of the importance of considering the potential effects of any decision on all stakeholders before it is finalised.



#### TUDOR HABITS AND VALUES:

You will learn how effective leaders are able to show empathy and care for their staff and how this will benefit motivation levels inside the organisation.

#### VOCABULARY:

Blake Mouton, Tannebaum & Schmidt, Intuition, Opportunity Cost, Stakeholder Mapping