

# LEARNING JOURNEY

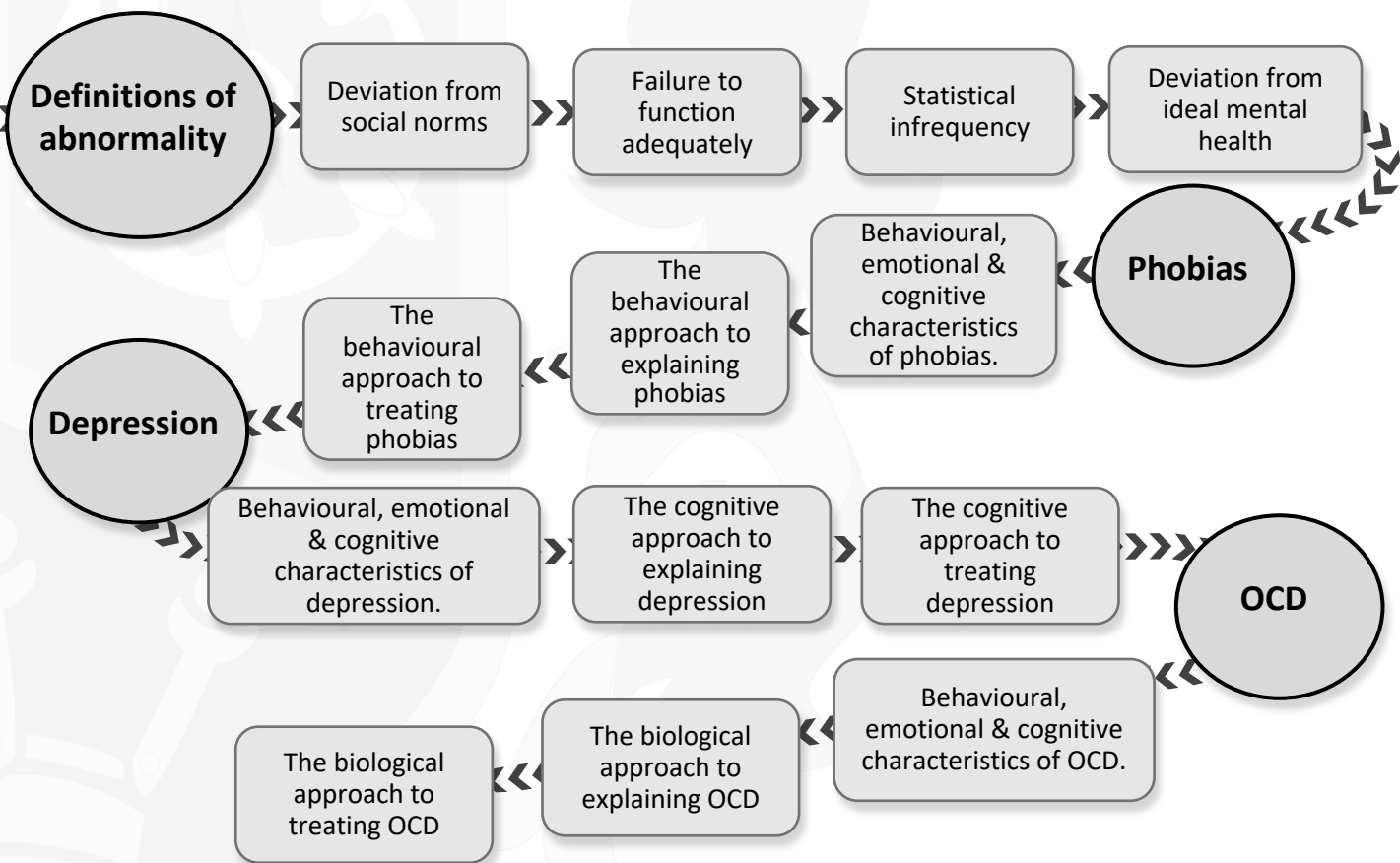
## PSYCHOLOGY



### Psychopathology

Year 12 spring term

1 in 4 people suffer with mental health issues. You will develop an understanding of abnormality (social norms, functioning, statistical abnormality and positive models of abnormality). Gaining awareness into how we explain and treat psychological illnesses, depression, phobias and OCD.



**TUDOR HABITS AND VALUES:** You will develop your empathy for individuals with mild to severe mental illnesses. Understanding key ideas to what causes and the potential treatment for mental illness to embed altruism. With 1 in 4 (and rising) your ability to demonstrate compassion and openness will not only make yourself more resistant to mental health illnesses, but strengthen the resolve of others.

**VOCABULARY:** Genetics, two-process model, classical conditioning, irrational thinking, social norms, CBT, failure to function, SSRI's obsession.